

PHILIPS



Wall mounted

Interior of a building requires different levels of lighting at different places. Corridors, hall-ways, break out places, meeting rooms, open area offices, stair cases, infact every space requires its own light for its own importance. Wall mounted luminaire is an option for adding light to such places.





CoreLine Wall-mounted

The clear choice for LED

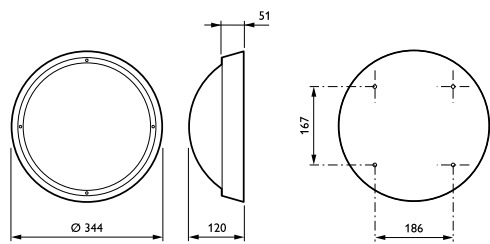
Whether for a new building or renovation of an existing space, customers want lighting solutions that provide quality of light and substantial energy and maintenance savings. The new CoreLine Wall-mounted range of LED products can be used to replace traditional wallmounted luminaires incorporating compact fluorescent lamps. The process of selecting, installing and maintaining is so easy – it's a simple switch.

Features and Benefits

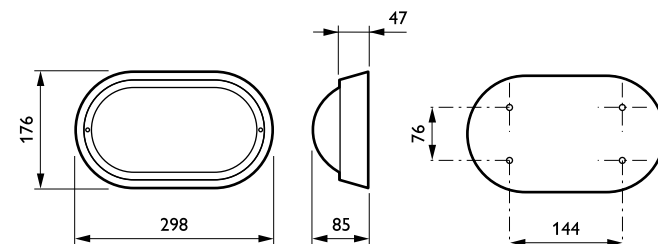
- Up to 55% energy savings compared with luminaires with PL-C lamps
- Direct replacement for traditional wall-mounted luminaires
- Complete range covering all application requirements in one product (light levels, IP65, IK10, certified emergency lighting, built-in controls)
- Unobtrusive design
- Three lumen packages replacing traditional wall mounted luminaires with 1x18W / 2x18W / 2x26W PL-C
- Water- and vandal-proof as standard
- Phase-cut dimming as standard
- Frosted diffuser ensuring homogeneous light effect and visual comfort
- Optional emergency lighting
- Optional on/off movement detection or programmed 100%-10%-0% corridor dimming functionality

Product size

All dimensions in millimeters



CoreLine Wall-mounted WL120V



CoreLine Wall-mounted WL120V

50Khrs
66
lm/W

Technical parameters

Type	WL120V (round version) WL121V (oval version)
Light source	Non-replaceable LED module
Power (±10%)	8 W (LED5S version) 18 W (LED12S version) 24 W (LED16S version)
Beam angle	120°
Luminous flux	500 lm (LED5S version) 1200 lm (LED12S version) 1600 lm (LED16S version)
Correlated Color Temperature	3000 or 4000 K
Color Rendering Index	≥ 80
Median useful life L70B50	50,000 hours
Median useful life L80B50	30,000 hours
Median useful life L90B50	15,000 hours
Average ambient temperature	25 °C
Driver	Built-in, replaceable
Mains voltage	220-240V / 50-60 Hz
Dimming	TE/LE dimming, compatible with most commercial available ELV dimmers
Options	Emergency lighting (integrated): 3 hours (EL3) Movement detection unit (integrated): on/off switch with day light override (MDU) DALI driver and movement detection unit (integrated): corridor functionality (PSD MDU)
Material	Housing: nylon 30% fiber glass re-inforced, UV resistant Difuser: high grade polycarbonate, UV resistant
Color	White (RAL 9010) Grey (RAL 7043)
Optical cover	Polycarbonate difuser
Connection	Push-in connector with pull relief (PIP)
Maintenance	LED module closed, no internal cleaning required
Installation	Screw mounting, directly onto surface 4-point screw installation of housing to wall 4-point torx screw connection difuser to housing Through-wiring not possible



8513 LED

The clear choice for LED

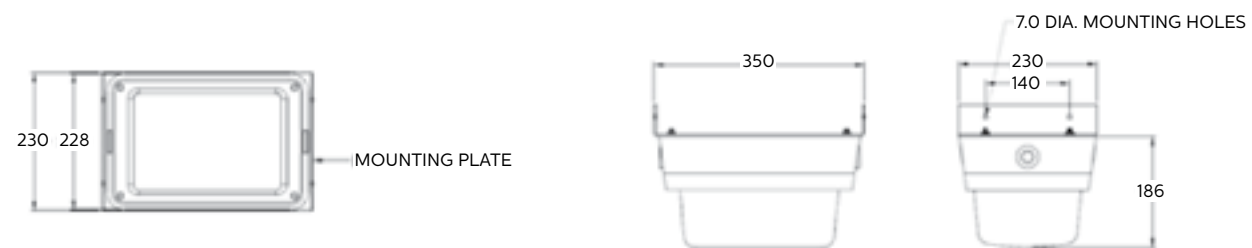
Ceiling or Wall Mounted Bulkhead Indoor or Outdoor Landscape LED Luminaire with Glass Diffuser Cover.

Features and Benefits

- Up to 50% energy savings compared with luminaires with PL-C lamps
- Direct replacement for traditional wall-mounted luminaires
- IP65

Product size

All dimensions in millimeters



IP65

Technical parameters

Product Number	8513
Protection Rating	IP-65
Light Source	Fulham LED module
Voltage/ Cycle	230V (Other voltages and frequencies upon request)
Control Gear	High power factor
Power Consumption	10.5W
Light Controllers	GP – Clear prismatic pattern tempered molded glass diffuser
Lumen Package	682lm
Drive Current	J=700mA
CCT	6500K