
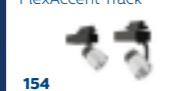

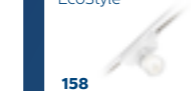



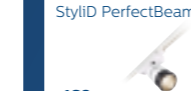





PHILIPS



Projector

Retailers are looking for an affordable LED lighting solution with a reasonable payback compared to conventional technologies. When trying to attract the attention of a shopper, they only have a few seconds to make an impact. The façade and shop window should facilitate in making this impact. Attractive lighting help here.

CoreLine Projector  152	FlexAccent Track  154	GreenSpace Accent Projector  156	EcoStyle  158
StyliD  160	StyliD CrispWhite  164	StyliD Fresh Food  166	StyliD PerfectBeam  168
StyliD Performance, FreshFood Rose  170	StyliD PremiumWhite  172	SM500T  174	Fresh Food, pendant  176





CoreLine Projector

The clear choice for LED

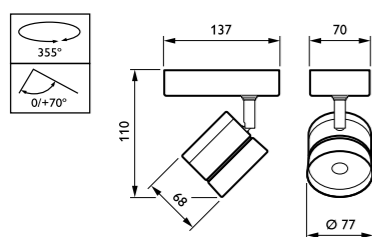
The CoreLine Projector range of luminaires is designed to replace halogen and CDM standard-based projectors. Their clean lines and attractive TCO help customers to make the switch to LED. These luminaires create a natural lighting effect for use in accent lighting applications. They also deliver instant energy savings and have a much longer lifetime, creating a real value-for-money and environmentally friendly solution. They are easy to install on a standard track or by means of a surface-mount connector.

Features and Benefits

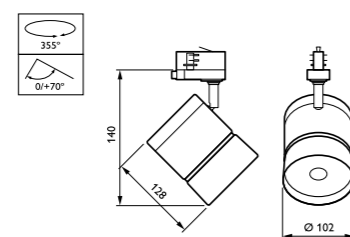
- Reduced operating costs thanks to energy savings and longer lifetime
- One-to-one replacement, facilitating the switch from conventional to LED luminaires
- Clean, simple finish ensures they blend discreetly into the store interior
- Smooth black finish with matt aluminum swivel
- Available in 800 and 2400 lumen versions
- Energy-efficient: 70 lm/W
- Integrated driver and passive cooling
- Choice of color temperature: 3000 and 4000 K

Product size

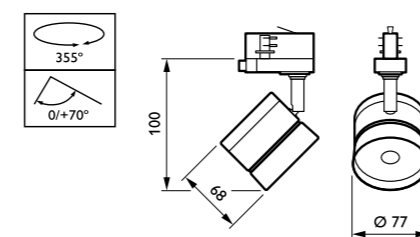
All dimensions in millimeters



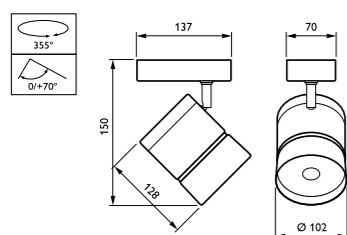
CoreLine Projector ST120C/ST120T



CoreLine Projector ST120C/ST120T



CoreLine Projector ST120C/ST120T



CoreLine Projector ST120C/ST120T



30Khrs
70
Lm/W

Technical parameters

Type	ST120T (3C track version) ST120C (surface mounted version)
Light source	Non-replaceable LED module
Power	11 W (800 lm) 33 W (2400 lm)
Efficacy	70 lm/W
Beam angle	24°
Luminous flux	800 or 2400 lm
Correlated Color Temperature	3000 K (Warm white) 4000 K (Neutral white)
Color Rendering Index	80
Median useful life L70B50	30,000 hours
Median useful life L80B50	20,000 hours
Median useful life L90B50	10,000 hours
Average ambient temperature	25 °C
Driver	Built-in
Mains voltage	230 or 240 V / 50-60 Hz
Dimming	No dimming
Material	Housing: die-cast aluminum Reflector: plastic Optic: polycarbonate
Color	Black (BK)
Connection	3C track adapter Click Fix Surface Mounting bracket
Installation	On 3-circuit track Individual or in line; clicking the luminaire into pre-screwed ceiling brackets Through-wiring not possible



FlexAccent Track

Supporting a general feeling of health and well-being

FlexAccent is the new LED solution for shop targeting energy saving. The system efficacy is 75lm/W in average, indicating more than 30% energy efficient compared to CDM solution.

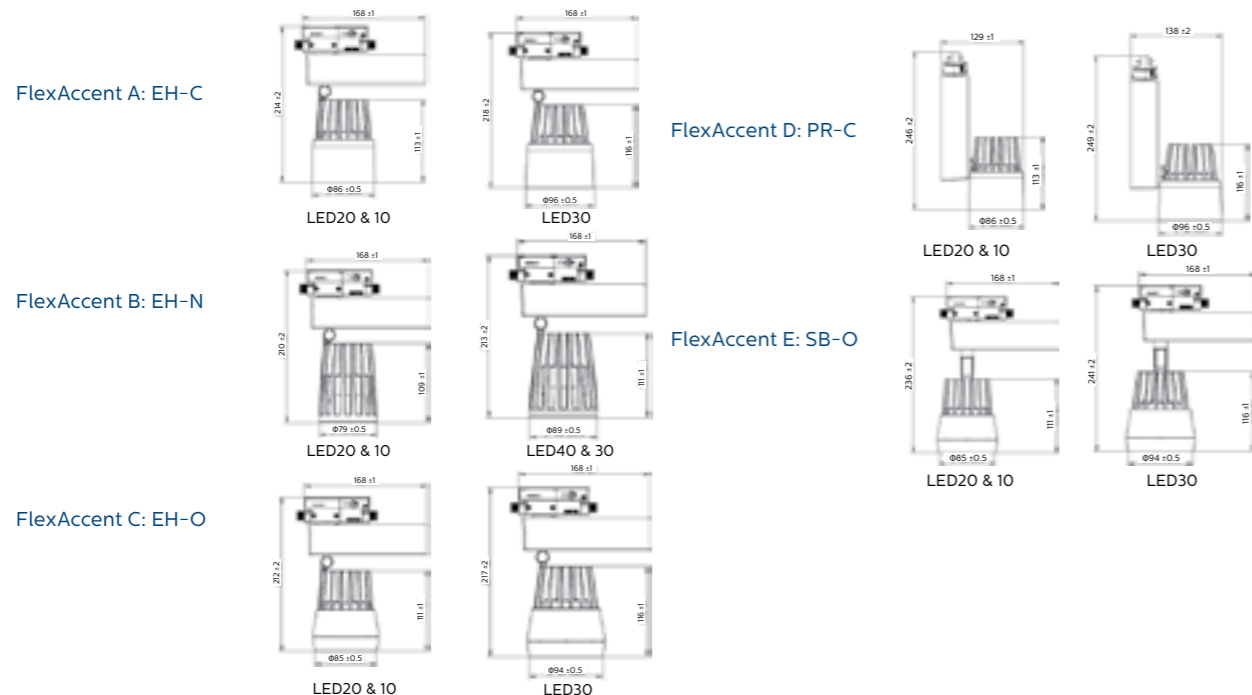
The compact design of FlexAccent is another unique selling proposition, thanks to the excellent thermal design eliminating the cooling fan.

Features and Benefits

- Diversity: plenty of choices on form factor, lumen output and optics
- Energy saving: >30% energy efficient compared to CDM solution
- Competitive price: 1 on 1 replacement over conventional CDM light
- System efficacy up to 85 lm/W
- CRI 80, CRI 90 optional for 3000K (CrispWhite Tech)
- High reliability, 30k hours (L70@25°C)

Product size

All dimensions in millimeters



up to 30Khrs
up to 85 lm/W

Technical parameters	
Type	FlexAccent ST291T (Track)
System lumen output	1000lm, 2000lm, 3000lm, 3900lm
Voltage	220-240V 50/60Hz
Power consumption	13W / 28-29W / 38-42W / 47-50W
Efficacy	70lm/W ~ 85lm/W
Power factor	0.9
LED driver	Fixed output
SDCM	<=5
CRI	80 (90 optional for 3000K)
Color temperature	3000K / 4000K / CW – CrispWhite (CRI90) for 3000K only
Form factor (Track)	ST291T EH-C; EH-N; EH-O; PR-C; SB-O (refer to the picture)
Materials and finishing	Optics: MCPET high reflectance film, PMMA diffuser with high haze and light transmission
Lifetime	30,000 hours (70% lumen maintenance @ Ta = 25°C)
Working Temperature Range	- 20°C < Ta < 40°C
Cut-out (Recessed)	125mm (1000lm; 2000lm) / 175mm (3000lm; 3900lm)
Weight	ST291T EH-C: 0.86~1.00KG ST291T EH-N: 0.85~0.95KG ST291T EH-O: 0.90~1.00KG ST291T PR-C: 0.85~0.98KG ST291T SB-O: 0.92~1.03KG
IP rating	IP20
Certifications	CB, CCC



GreenSpace Accent Projector

A flexible and affordable retail toolbox

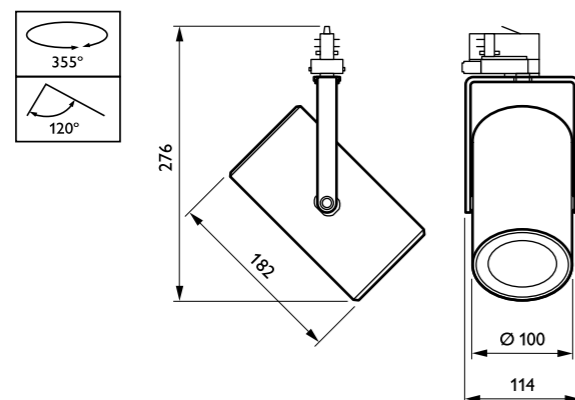
Thanks to the GreenSpace Accent family, retailers and building operators can now make the switch from CDM to LED and enjoy the benefits of Philips PerfectAccent light quality as well as significant energy savings – all for a reasonable initial investment. GreenSpace Accent Projector's regular 3C adaptor and specific lumen packages make retrofit installation quick and easy. For fashion and food retailers, GreenSpace Accent Projector is available with special light flavors and LED recipes for food product on offer in the very best light.

Features and Benefits

- Clean and robust design
- Full retail application coverage
- Lighting flexibility beyond CDM
- Driver integrated in a compact housing
- Philips PerfectAccent light quality
- Light flavors for fashion and LED recipes for food included
- CDM retrofit track-mounted luminaire

Product size

All dimensions in millimeters



70Khrs
121
lm/W

Technical parameters

Type	ST320T (3C track version)
Light source	Non-replaceable LED module
Power	14.4, 23 and 32.9 W at light colors 830, 840 and 827 for LED17S, LED27S and LED39S
Beam angle	10° (NB), 24° (MB), 36° (WB), 60° (VWB)
Luminous flux	1700 lm (for light color 830, PW9) 2600 lm (light color 827, PW9 and CRW) 3600 lm (light color PW9) 1750 lm (for light color CRW, CH) 1650, 3700 lm (for light color 827) 2700, 3900 lm (for light color 830) 1800, 2800, 4000 lm (for light color 840)
Correlated Color Temperature	2500 K (for Fresh Food Champagne CH) 2700, 3000 K (for 830, PremiumWhite PW9, CrispWhite CRW, Fresh Food Meat FMT) 4000 K
Color Rendering Index	>80 (for 3000, 4000 and 2700 K, Fresh Food Meat FMT) >90 (for PremiumWhite PW9, CrispWhite CRW, Fresh Food Champagne CH)
Standard deviation color matching (SDCM)	3 (with a tolerance of $\pm 0,005$ on color point measurement)
Median useful life L70B50	70,000 hours
Median useful life L80B50	50,000 hours
Median useful life L90B50	25,000 hours
Average ambient temperature	25 °C
Driver	Built-in
Mains voltage	220-240 V / 50-60 Hz
Dimming	Not available
Material	Tube: aluminum Bracket: polyamide Optical cover: PMMA
Color	White (WH, RAL9003), black (BK, RAL 9004), silver (SI, RAL9006)
Connection	3C track adaptor
Installation	On 3-circuit track Through-wiring not applicable
Accessories	Honeycomb (HC), skirt black or white (SK). To be ordered separately or directly with the product.



EcoStyle

Efficient and affordable

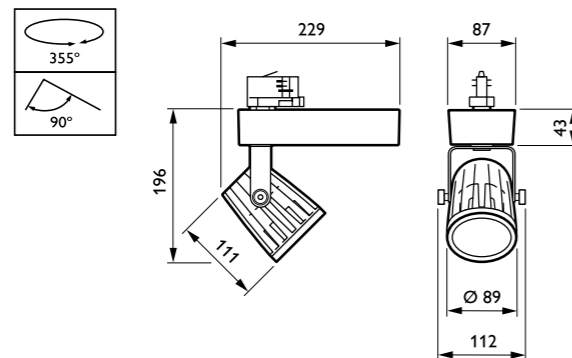
Retailers are looking for an affordable LED accent-lighting solution with a reasonable payback compared to conventional technologies. Now, thanks to EcoStyle, they need look no further. With a LED light source and dedicated reflector system, EcoStyle delivers powerful, good-quality accent lighting, enabling retailers to display their merchandise in the best possible light. For food and fashion retailers, EcoStyle is available with special light recipes to further enhance the store ambiance and to show the produce and goods on offer in the very best light: Fresh Food Champagne is the perfect LED solution for displaying fruit, vegetables, cheese, bread and pastries in a warm lighting ambiance; Fresh Food Meat creates the best light setting for meat enhancement in a cool natural ambiance; CrispWhite is the clear choice for fashion retailers to make colors appear rich and intense while keeping whites bright. The track-mounted EcoStyle is also available in a choice of black or white finish. And the combination of efficient LED technology and an innovative heat-sink ensures that this is a reliable, lasting solution.

Features and Benefits

- Short payback compared with CDM luminaires thanks to high level of system efficacy
- High-quality accent lighting thanks to the light signature of the PerfectAccent reflector
- Energy-efficient and low-maintenance thanks to LED technology
- High efficacy
- Philips PerfectAccent quality of light
- CDM retrofit track-mounted luminaire
- Clean, robust design
- 5 different light recipes

Product size

All dimensions in millimeters



70Khrs
72
lm/W

Technical parameters

Type	ST440T
Light source	Non-replaceable LED module
Power	18 W (LED17S; 830 and 840) 29.5 W (LED27S; 830, 840) 31.5 W (LED19S; Fresh Food Meat, FMT) 35 W (LED27S; CrispWhite, CRW) 31.5 W (LED35S; 830 and 840) 51 W (LED27S; Fresh Food Champagne, CH)
Beam angle	MB (20° for LED27S) WB (33° for LED27S)
Luminous flux	1700, 2700, 3400 lm (light color 830) 1800, 2900, 3700 lm (light color 840) 1900 lm (Fresh Food Meat, FMT) 2700 lm (Fresh Food Champagne, CH) 2700 lm (CrispWhite, CRW)
Correlated Color Temperature	2500 K (LED27S; Fresh Food Champagne, CH) 3000 K 4000 K
Color Rendering Index	>80 (830, 840) 87 (Fresh Food Meat, FMT) 90 (Fresh Food Champagne, CH) >93 (CrispWhite, CRW)
Standard deviation color matching (SDCM)	3 (with a tolerance of $\pm 0,005$ on color point measurement)
Median useful life L70B50	70,000 hours
Median useful life L80B50	50,000 hours
Median useful life L90B50	25,000 hours
Average ambient temperature	25 °C
Driver	Built-in
Mains voltage	220-240 V / 50-60 Hz
Dimming	DALI dimming on request
Material	Driver box: plastic Heatsink: die-cast aluminum Reflector: polycarbonate Optic cover: polymethylmethacrylate (PMMA)
Color	White (WH, RAL 9003), black (BK, RAL 9004)
Connection	3C track adapter
Installation	On 3-circuit track Through-wiring not possible



StyliD

The best energy-efficient range for retail applications

StoreWise system compatible

Retailers are increasingly having to contend with rising energy prices. At the same time, they need to retain the quality of light they are used to, flexibility in architectural integration, and the right light effects to catch the customer's eye. Last but not least, they need futureproof solutions that will enable them to implement differentiating concepts in their store. Delivering high-quality light, punch in the beam and outstanding luminous efficacy, StyliD is the ideal energy-efficient solution for today's demanding retail environments, covering a variety of lighting applications, with including CrispWhite for fashion stores and Food recipes for supermarkets. StyliD family features full passive cooling for the complete range that allows faster payback in the Performance size as well.

Features and Benefits

- Attract shoppers with high-quality light
- Luminaire design blends discreetly into the store
- Good energy performance, matching CDM Elite while offering much longer lifetime and payback of the Total Cost of Ownership within three years.
- Efficacy of up to 110 lm/W, thanks to very Hi-LOR reflectors (90%) and passive cooling
- Lumen packages from 1200 to 4900 lm to match equivalent CDM 20/35/50/70 W MASTERColour Elite
- Choice of color temperatures: 2700, 3000 and 4000K
- Color rendering index 80 and 90
- Narrow, medium, wide, very wide and oval beams available
- Passive cooling for all range
- Dimmable versions
- Range of accessories (honeycomb, snoot)

Technical parameters	
Type	ST730T (mini, 3C-track version) ST730C (mini, base plate version) ST740T (compact, 3C-track version) ST740C (compact, base plate version) ST750T (performance, 3C-track version) ST750C (performance, base plate version)
Light source	Non-replaceable LED module
Power (±10%)	Mini versions NB (LED11S): 15 to 18 W (depending on light color) MB, WB (LED12S): 12 to 16 W (depending on light color) Compact versions NB (LED20S): 27 W MB, WB (LED17S): 16 to 20 W (depending on light color) MB, WB (LED27S): 25 to 32 W (depending on light color) MB, WB (LED39S): 39 W Performance versions NB (LED40S): 55W MB, WB, LIN (LED27S): 24 to 31 W MB, WB, VWB, LIN (LED39S): 35 to 46 W (depending on light color) MB, WB, VWB, LIN (LED49S): 47 to 56 W (depending on light color)

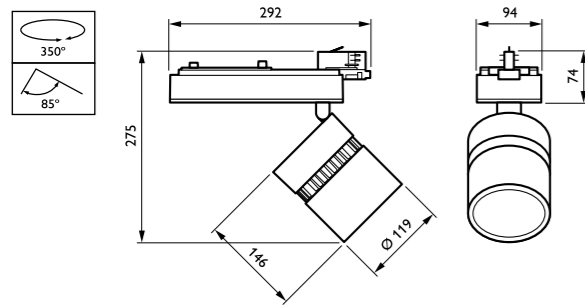


70Khrs
100
lm/W

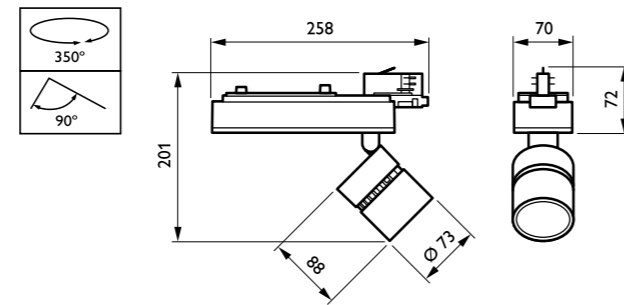
Technical parameters	
Beam angle	Mini and compact versions NB (10°) MB (28–24–30°) WB (36–34–37°) LIN (oval lense) Performance versions NB (15°) MB (21°, ± 2 degrees depending on lumen package) WB (30°, ± 2 degrees depending on lumen package) VWB (53°, ± 2 degrees depending on lumen package) WB LIN (WB + oval lense) : 29 x 51° VWB LIN (VWB + oval lense) : 46 x 60°
Luminous flux	Mini versions NB (LED11S): 1000 lm MB, WB (LED12S): 1200 lm Compact versions NB (LED20S): 1600 to 2100 lm (depending on light color) MB, WB (LED17S): 1600 to 1800 lm (depending on light color) MB, WB (LED27S): 2500 to 2900 lm (depending on light color) MB, WB (LED39S): 3200 to 4200 lm
Light source color	827, 830, 840, 930
Correlated Color Temperature	2700, 3000 or 4000 K
Color Rendering Index	80 90 >95
Standard deviation color matching (SDCM)	3 (with a tolerance of ± 0,005 on color point measurement)
Median useful life L70B50	70,000 hours
Median useful life L80B50	50,000 hours
Median useful life L90B50	25,000 hours
Average ambient temperature	25 °C
Operating temperature range	10 to 35 °C
Driver failure rate	1% for 5000 hours
Driver	Built-in
Mains voltage	230 or 240 V / 50–60 Hz
Dimming	Mini and compact versions Non-dimmable (PSE when emergency lighting is included, PSU when emergency lighting is not included) DALI-dimmable (PSED when emergency lighting is included, PSU when emergency lighting is not included) Performance versions Fix (PSE-E when DC compatible, PSU when NOT DC compatible) DALI (PSED-E when DC compatible, PSU when NOT DC compatible)
Material	Gearbox: plastic Head and heatsink: die-cast aluminum Front cover: acrylic or glass
Color	Black (BK, RAL9004) White (WH, RAL9003) White-Black (WH-BK, head housing and front driver box: white, heatsink and sides driver box: black) Aluminum brushed-black (ALU-BK, head housing and front driver box: brushed aluminum; heatsink and sides driver box: black) Silver-black (SI-BK, head housing and front driver box: RAL 9006 metalized grey; heatsink and sides driver box: black) Other RAL colors available on request
Optical cover	Mini and compact versions Glass (for narrow beam) Acrylic cover (for other beams) Performance versions Clear with jaws (for medium beam) Clear with diffusor foil (for other beams)
Connection	Track connector (3C for fix track or 5C6 for DALI track) Direct on ceiling; baseplate with connection point (BA)
Installation	Track connector (3C for fix track or 5C6 for DALI track) Direct on ceiling; baseplate with connection point (BA)
Accessories	Honeycomb (HC) Glare shield (GS)

Product size

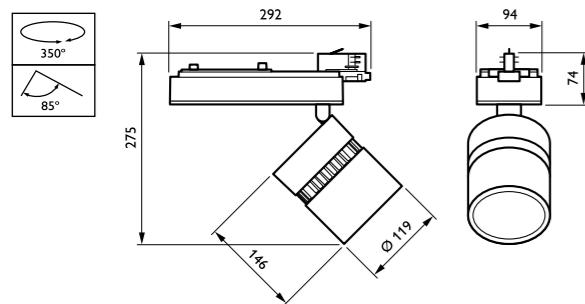
All dimensions in millimeters



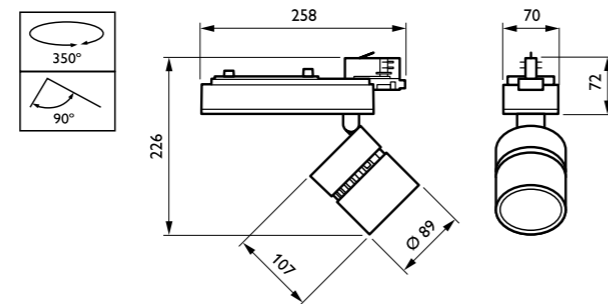
StyliD ST730C-ST750T



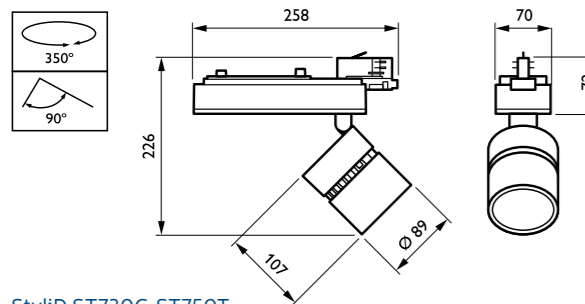
StyliD ST730C-ST750T



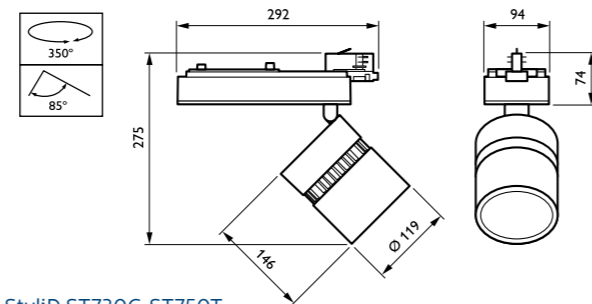
StyliD ST730C-ST750T



StyliD ST730C-ST750T



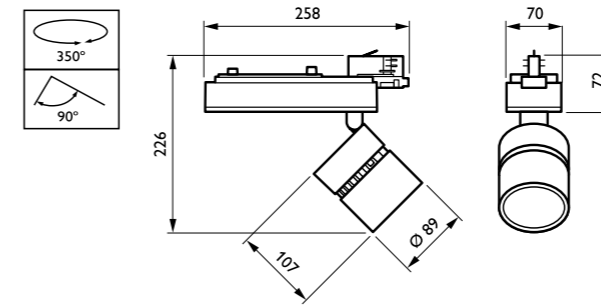
StyliD ST730C-ST750T



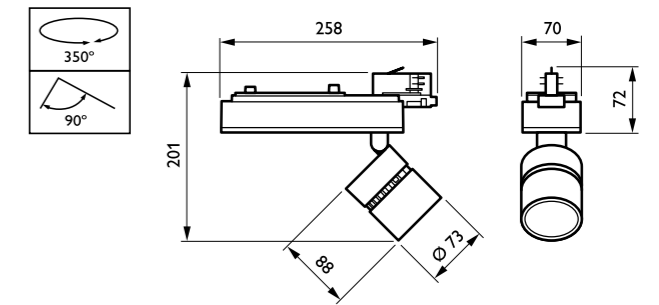
StyliD ST730C-ST750T

Product size

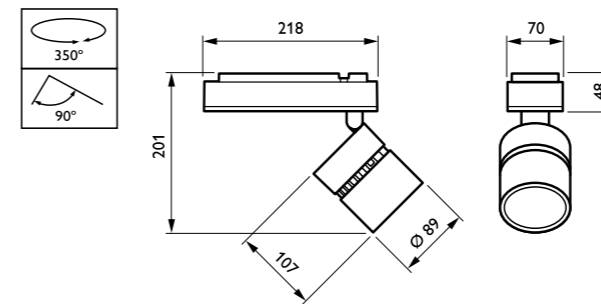
All dimensions in millimeters



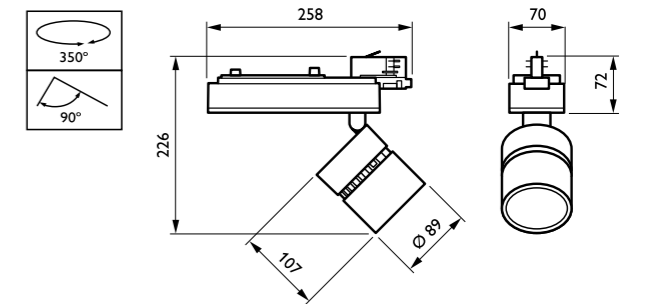
StyliD ST730C-ST750T



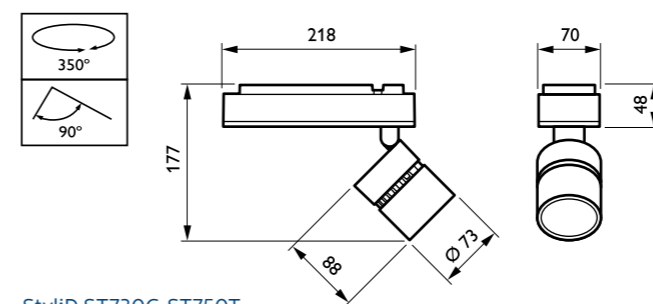
StyliD ST730C-ST750T



StyliD ST730C-ST750T



StyliD ST730C-ST750T



StyliD ST730C-ST750T



StyliD CrispWhite

Experience intense whites and rich colors

Retailers are increasingly having to contend with rising energy prices. At the same time, they need to retain high-quality lighting to catch the customer's eye, as well as flexibility in architectural integration. Fashion retailers generally want superior light sources that illuminate fabrics in the truest way possible, making colors appear rich and intense while keeping whites bright. A warm color temperature is often preferred, as it keeps colors true and saturated. Until now, a drawback of LED has been that whites can appear yellowish.

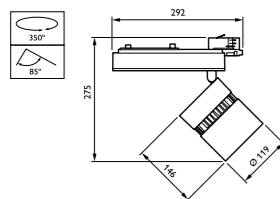
The good news – that's about to change. CrispWhite is a unique concept in retail lighting that makes whites appear whiter than white, yet still gives colors a warm and saturated intensity. This new color experience will wow customers and make merchandise impossible to resist.

Features and Benefits

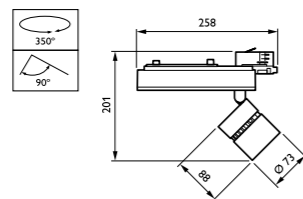
- Attract shoppers with high-quality light that accentuates intense whites and rich colors
- Luminaire design blends discreetly into the store
- Good energy performance, matching CDM Elite while offering much longer lifetime
- Optimized light spectrum for intense white light and rich color rendering
- Efficacy of up to 80 lm/W, thanks to very Hi-LOR reflectors (up to 90%)
- Lumen packages from 1200 to 3900 lm to match equivalent CDM 35 W MASTERColour Elite
- Narrow, medium and wide beam available
- Passive cooling

Product size

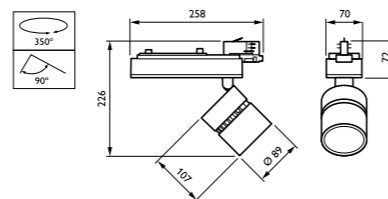
All dimensions in millimeters



StyliD ST730C-ST750T



StyliD ST730C-ST750T



StyliD ST730C-ST750T

70Khrs
78 lm/W

Technical parameters	
Type	ST730T (mini, 3C-track version), light source color CrispWhite (CRW) ST730C (mini, base plate version), light source color CrispWhite (CRW) ST740T (compact, 3C-track version), light source color CrispWhite (CRW) ST740C (compact, base plate version), light source color CrispWhite (CRW) ST750T (performance, 3C-track version), light source color CrispWhite (CRW) ST750C (performance, base plate version), light source color CrispWhite (CRW)
Light source	Non-replaceable LED module
Power	Mini versions: 20 W (LED11S), 16 W (LED12S) Compact versions: 20 W (LED11S), 22 W (LED17S), 34 W (LED27S) Performance versions: 58 W (LED27S), 60 W (LED39S)
Beam angle	Mini versions: NB (12°), MB (28°), WB (36°) Compact versions: NB (11°), MB (25°), WB (35°) Performance versions: NB (15°), MB (22°), WB (36°), VWB (52°)
Luminous efficacy	Mini: 73 lm/W (for LED11S), 76 lm/W (for LED12S) Compact: 78 lm/W (for LED11S, LED17S, LED27S) Performance: 44 lm/W (for LED27S), 65 lm/W (for LED39S)
Luminous flux	Mini versions: 1450 lm (for LED11S) 1200 lm (for LED12S) Compact versions: 1500 lm (for LED11S), 1700 lm (for LED17S), 2700 lm (for LED27S) Performance versions: 2550 lm (for LED27S), 3900 lm (for LED39S)
Correlated Color Temperature	3000 K
Color Rendering Index	95 (light color 930, CrispWhite)
Standard deviation color matching	3
Median useful life L70B50	70,000 hours
Median useful life L80B50	50,000 hours
Median useful life L90B50	25,000 hours
Average ambient temperature	25 °C
Driver failure rate	1% per 5000 hours
Driver	Built-in
Mains voltage	230 or 240 V / 50-60 Hz
Dimming	Non-dimmable (PSU) DALI-dimmable (PSD)
Material	Gearbox: plastic Head and heatsink: die-cast aluminum Front cover: acrylic or glass
Color	Black (BK, RAL9004) White (WH, RAL9003) White-Black (WH-BK, head housing and front driver box: white, heatsink and sides driver box: black) Aluminum brushed-black (ALU-BK, head housing and front driver box: brushed aluminum; heatsink and sides driver box: black) Silver-black (SI-BK, head housing and front driver box: RAL 9006 metalized grey; heatsink and sides driver box: black) Other RAL colors available on request
Optical cover	Glass (for narrow beam) Acrylic cover (for other beams)
Connection	Track connector (3C or 5C6) Direct on ceiling; baseplate with connection point (BA)
Accessories	Honeycomb (HC) Glare shield (GS)
Remarks	Retailers generally want high-quality light sources that illuminate fabrics in the truest way possible, making colors appear rich and intense, while keeping whites bright. CrispWhite has been developed as special solution for fashion environments to bring out in the best way both colors and whites.



StyliD Fresh Food

Bring your food produce to life

FreshFood Meat system compatible

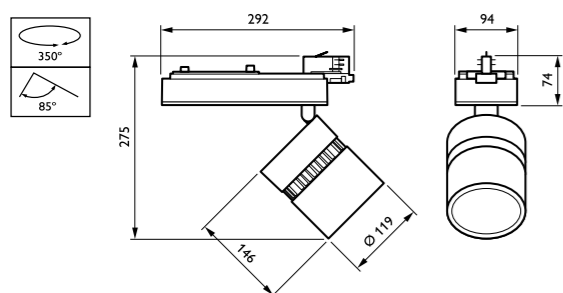
Retailers are increasingly having to contend with rising energy prices. At the same time, they need to retain high-quality lighting to catch the customer's eye, as well as flexibility in architectural integration. Food retailers generally want superior light sources that illuminate their fresh food counters in the freshest way possible, making food appealing while keeping the light ambiance attractive and welcoming. When a warm light ambiance is preferred, Fresh Food Champagne is the perfect LED solution to light fruit, vegetables, cheese, bread and pastries. Fresh Food Rose is a perfect warm-light solution for meat counters, enhancing the redness of meat but also slowing down the discoloration of sliced meat. When a brighter or more natural light ambiance is preferred, Fresh Food Authentic White is recommended for fruits, vegetables, cheeses, bread and pastries. Fresh Food Meat creates the best light setting for meat enhancement in a cooler ambiance.

Features and Benefits

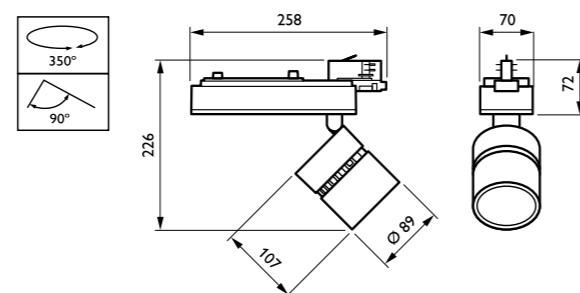
- Fresh Food Champagne offers a nice warm ambiance while enhancing the color of fruit, vegetables, cheese and bread
- Fresh Food Meat offers a cooler natural light setting while enhancing the redness of meat
- Fresh Food Rose creates a warm ambiance while enhancing the redness of meat & slowing down sliced meat discoloration
- High color rendering
- Special spectrums tailored to the specific requirements of fresh food counters
- DALI dimming to adjust the light exactly to the desired level

Product size

All dimensions in millimeters



StyliD ST730C-ST750T



StyliD ST730C-ST750T

70Khrs
55
lm/W

Technical parameters

Type	ST740T (compact, 3C-track version), light source color Fresh Food Meat (FMT) or Fresh Food Champagne (CH) ST740C (compact, base plate version), light source color Fresh Food Meat (FMT) or Fresh Food Champagne (CH) ST750T (performance, 3C-track version), light source color Fresh Food Meat (FMT), Fresh Food Champagne (CH) or Fresh Food Rose (ROSE) ST750C (performance, base plate version), light source color Fresh Food Meat (FMT), Fresh Food Champagne (CH) or Fresh Food Rose (ROSE)
Light source	Non-replaceable LED module
Power	Compact versions: 31 W (LED17S, light color CH), 36 W (LED19S, light color FMT) Performance versions: 31 W (LED19S, light color ROSE), 47 W (LED26S, light color FMT), 48 W (LED26S, light color ROSE) 49 W (LED27S, light color CH)
Beam angle	Compact versions: MB (25°), WB (35°) Performance versions: MB (25°), WB (35°), VWB (60°)
Luminous flux	Compact versions: 1700 lm (LED17S, light color CH), 1900 lm (LED19S, light color FMT) Performance versions: 1900 lm (LED19S, light color ROSE), 2600 lm (LED26S, light color FMT and ROSE), 2700 lm (LED27S, light color CH)
Correlated Color Temperature	2200 K (light color ROSE) 2500 K (light color CH) 3000 K (light color FMT)
Color Rendering Index	>80 (light color ROSE) 87 (light color FMT) 90 (light color CH)
Standard deviation color matching	3
Median useful life L70B50	70,000 hours
Median useful life L80B50	50,000 hours
Median useful life L90B50	25,000 hours
Average ambient temperature	25 °C
Driver failure rate	1% per 5000 hours
Operating temperature range	10 to 35 °C
Driver	Built-in
Mains voltage	230 or 240 V / 50-60 Hz
Dimming	Non-dimmable (PSU) DALI-dimmable (PSD)
Material	Gearbox: plastic Head and heatsink: die-cast aluminum Front cover: acrylic or glass
Color	Black (BK, RAL9004) White (WH, RAL9003) White-Black (WH-BK, head housing and front driver box: white, heatsink and sides driver box: black) Aluminum brushed-black (ALU-BK, head housing and front driver box: brushed aluminum; heatsink and sides driver box: black) Silver-black (SI-BK, head housing and front driver box: RAL 9006 metalized grey; heatsink and sides driver box: black) Other RAL colors available on request
Optical cover	Acrylic cover (AC) Linear-lens array, oval shape (LIN)
Connection	On 3-circuit track (3C or 5C6) Direct on ceiling; baseplate with connection point (BA)
Accessories	Honeycomb (HC) Glare shield (GS)
Remarks	Fresh Food Champagne (CH) is the dedicated light recipe for bread and pastries, fruits and vegetables area. It brings a warm traditional ambiance. Fresh Food Meat (FMT) and Fresh Food Rose (ROSE) are both dedicated light recipes for meat counters. You can choose between a natural cool light setting (FMT) or strong, warm enhancement of the meat appearance (ROSE).



StyliD PerfectBeam

Bring quality to your museums

StyliD PerfectBeam has been developed specifically for museum applications. It strikes the perfect balance between presenting art and preserving it, between ever-changing exhibitions and the need for low maintenance and energy efficiency. The often conflicting demands for good visibility and conservation are now being met with LED lighting that emits no harmful UV or IR radiation. StyliD PerfectBeam presents works of art in their true colors, subtly attracting the viewer's eye, making it easy to see, interpret and appreciate masterpieces down to the smallest detail. It enables you to use light to evoke emotions and create an unforgettable museum experience. Its modular design, variable beam, beam shaping accessories and onboard dimming ensure maximum flexibility to cope with changing exhibitions and lighting needs, now and in the future.

Features and Benefits

- Superior light quality – making visible what the artist intended
- Optimal art preservation – protecting precious exhibits
- Maximum beam flexibility – adapting to changing exhibition needs
- Variable Spot (7 through 43°) and Framing Projector options
- Modular design with beam shaping accessories, easy to adapt
- Patented technology for superior beam uniformity in the Variable Spot
- Product design inspired by precision optics like camera lenses
- No UV or IR radiation that is harmful to precious exhibits
- High color rendering: CRI 90+
- Minimal glare



70Khrs
11
lm/W

Technical parameters

Type	ST741T (Variable Spot version) ST742T (Framing Projector version)
Light source	LED module
Power	21 W
Beam angle	ST741T: 7 to 43° ST742T: 30°
Luminous flux	ST741T: 450 to 660 lm (for 3000 K) ST742T: 240 lm (for 3000 K)
Correlated Color Temperature	2700 K 3000 K Other color temperatures available on request
Color Rendering Index	> 90
Standard deviation color matching (SDCM)	3 (with a tolerance of ± 0,005 on color point measurement)
Median useful life L70B50	70,000 hours
Median useful life L80B50	50,000 hours
Median useful life L90B50	25,000 hours
Average ambient temperature	25 °C
Driver failure rate	1% per 5000 hours
Operating temperature range	10 to 35 °C
Driver	Built-in
Mains voltage	220 or 240 V / 50-60 Hz
Dimming	On board dimming 1-10 V (10-100%)
Controls system input	1-10 V DALI dimming available on request
Material	Housing: aluminum Heatsink: die-cast aluminum Driver box: plastic Internal lenses: glass Frontal lenses: PMMA
Color	Black (BK) White, with black details (WH) Other colors available on request
Connection	3C track connector
Installation	On 3C track
Remarks	Interchangeable frontal lenses can be used to create different light effects Variable Spot (ST741T): - Standard included: clear and soft frontal lens - Separate accessories: linear frontal lens (ST741Z) to create a stripe or wallwashing effect Framing Projector (ST742T): - Standard included: clear frontal lens - Separate accessories: soft frontal lens to create soft edges on request



StyliD Performance, FreshFood Rose

Maximum enhancement and protection of your fresh meat produce

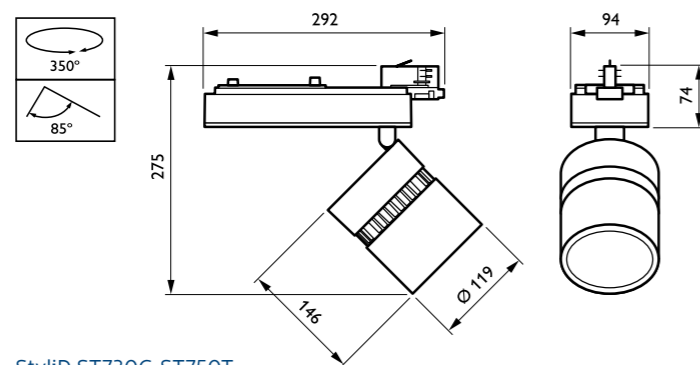
Food retailers are constantly looking for ways to present their fresh produce in the very best light imaginable – to make it even more appealing and appetizing to consumers. StyliD Performance FreshFood Rose are accent lighting luminaires which offer a specific light color spectrum that particularly enhances the reds of fresh meat produce and protect it against accelerated discoloration. For other fresh food like fruit and vegetables or fish, you can choose from the other Philips FreshFood light recipes – Champagne (827), Frost (840) and Authentic White (930).

Features and Benefits

- Enhances fresh food produce with a specially developed light spectrum called Rose
- Energy savings of up to 40% compared to conventional CDM and SDW technology
- Long lifetime, saving on maintenance costs
- Dedicated fresh-food light spectrum (Rose) with a very warm color temperature
- Efficient LED board and high-quality optics; high flux and powerful accent effects
- Two lumen packages available to cover all kinds of store installations
- Three beam angles (MB, WB, EWB) and special oval beam accessory (LIN) to focus the light where it is needed and increase the spacing between luminaires
- Choice of mounting: track and surface mounted

Product size

All dimensions in millimeters



StyliD ST730C-ST750T

70Khrs
54
lm/W

Technical parameters

Type	ST550T (3C-track version) ST550C (surface-mounted version)
Light source	Non-replaceable LED module
Power (±10%)	31 W (LED19S) 48 W (LED26S)
Beam angle	MB (25°), WB (35°), VWB (60°)
Correlated Color Temperature	ROSE
Luminous flux	1900 lm (LED19S) 2600 lm (LED26S)
Color Rendering Index	>80
Median useful life L70B50	70,000 hours
Median useful life L80B50	50,000 hours
Median useful life L90B50	25,000 hours
Driver failure rate	1% per 5000 hours
Average ambient temperature	25 °C
Driver	Built-in
Power/Data supply	DALI-dimmable (PSD)
Mains voltage	230 or 240 V / 50-60 Hz
Material	Gearbox: plastic Head and heatsink: die-cast aluminum Front cover: acrylic or glass
Color	Black (BK, RAL9004) White (WH-WH, RAL9003) White-black (WH-BK, head housing and front driver box: white painting; heatsink and sides driver box: black painting) Aluminum brushed (ALU, head housing and front driver box: brushed aluminum; heatsink and sides driver box: black painting) Silver (SI, RAL 9006 metalized grey) Other RAL colors available on request
Optical cover	Glass, clear (GC) Glass clear with diffusor foil frosted look (GC-D) Glare control glass (GCG) Linear-lens array, oval shape (LIN) only available with MB and WB
Connection	Push-in or track connector GA69 Track connector (3C or 5C6) Push-in connector or with pull relief
Installation	On 3-circuit track or direct on ceiling Through-wiring possible
Remarks	Fresh Food Rose light recipe helps slowing down meat discoloration. It brings a warm traditional light setting. We have other Fresh Food recipes available in StyliD: - Fresh Food Champagne (CH) is the dedicated light recipe for bread and pastries, fruits and vegetables area. It brings a warm traditional ambiance. - Fresh Food Meat (FMT) is a another dedicated light recipe for meat counters. It brings a natural cool light setting.



StyliD PremiumWhite

Ideal mix of outstanding light quality and energy savings for (fashion) retailers

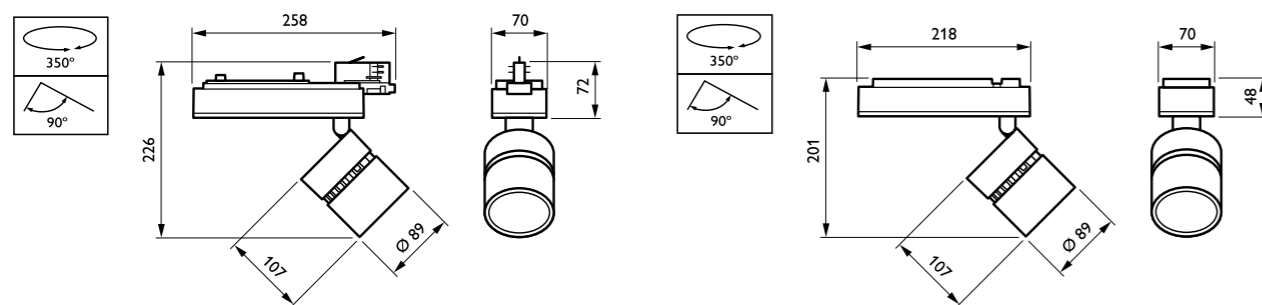
If you want a high quality of light and color rendering for your store, without having to compromise on energy savings, then StyliD PremiumWhite is exactly what you are looking for. This exciting solution delivers the same sparkling light effects as CDM conventional lighting. So now you can make the switch to LED with confidence!

Features and Benefits

- Natural, warm light delivering outstanding colors and whites
- Very good efficiency (>85 lm/W)
- CRI >90
- PerfectAccent reflectors
- Light efficacy on par with CCT 930
- SDCM3
- Light color positioning below black body locus (similar to CDM)

Product size

All dimensions in millimeters



StyliD ST730C-ST750T

StyliD ST730C-ST750T

70Khrs 91 lm/W

Technical parameters

Type	ST740T (compact, 3C-track version) ST740C (compact, surface-mounted version)
Light source	Replaceable LED module
Power (±10%)	18.5 W (LED17S) 30.5 W (LED27S)
Beam angle	MB: 24° (LED17S), 29° (LED27S) WB: 36° (LED17S), 35° (LED27S) MB LIN (MB + oval lens): 41 x 28° (LED17S), 40 x 36° (LED27S) WB LIN (WB + oval lens): 53 x 33° (LED17S), 42 x 36° (LED27S)
Luminous flux Light source color	1800 or 2800 lm
Light source color	Premium white with CRI>90 (PW9)
Correlated Color Temperature	3000 K
Color Rendering Index	> 90
Median useful life L70B50	70,000 hours
Median useful life L80B50	50,000 hours
Median useful life L90B50	25,000 hours
Driver failure rate	1% per 5000 hours
Average ambient temperature	25 °C
Driver	Built-in
Mains voltage	230 or 240 V / 50-60 Hz
Material	Gearbox: plastic Head and heatsink: die-cast aluminum Front cover: acrylic or glass
Color	Black (BK, RAL9004) White (WH, RAL9003) White-Black (WH-BK, RAL9003-RAL9004) Aluminum brushed-black (ALU-BK, ALU-RAL9004) Silver-black (SI-BK, RAL9006-RAL9004)
Optical cover	Clear with jaws (for medium beam) Clear with diffusor foil (for other beams)
Connection	3C track connector or DALI connector
Installation	On 3-circuit track Individual; screw mounting



SM500T

Ambiance creation made flexible

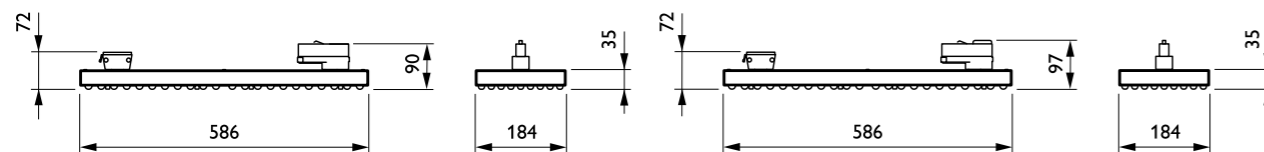
In today's retail market, online sales are growing rapidly and fierce competition is the order of the day. Therefore, retailers want to create experiences that will attract customers to their stores. The SM500T adds atmosphere to your store by introducing contrast and breaking up the traditional continuous light-lines. A variety of beam shapes combined with excellent light quality ensures the merchandise stands out, whilst at the same time enabling you to create your chosen ambience. The SM500T is equipped with power-track connectors. These make it easy to install and to replace or upgrade when re-using existing track. And if your needs change, you can simply adapt the lighting by repositioning the fixtures along the track. This makes the SM500T a truly flexible tool for setting the ambience.

Features and Benefits

- Always your choice of illumination and ambience thanks to the variety of optics
- Thin-design track fixture enables use of power track systems for low ceilings
- Energy savings as a result of best-in-class lighting performance
- Sparkling, high-quality white LED light
- Wide variety of optics
- Fixture directly aligned when installed, no adjustment needed
- Projectors can easily be added to create accent lighting
- Uses standard adaptors

Product size

All dimensions in millimeters



SM500 SM500T

SM500 SM500T

70Khrs
130
lm/W

Technical parameters

Type	SM500T
Light source	Non-replaceable LED module
Power	58-61 W
Beam angle	2 x 20° 2 x 35° 100, 115 or 130°
Luminous flux	7900 lm
Correlated Color Temperature	3000 or 4000 K
Color Rendering Index	> 80
Median useful life L70B50	70,000 hours
Median useful life L80B50	50,000 hours
Median useful life L90B50	25,000 hours
Driver failure rate	1% per 5000 hours
Average ambient temperature	25 °C
Driver	Built-in
Mains voltage	230 or 240 V / 50-60 Hz
Dimming	DALI dimmable
Material	Housing with integrated driver box: lacquered steel Lens plate: PMMA
Color	Black (RAL9005) Grey (RAL9006)
Connection	Track connection: GA100 or GAC600
Maintenance	Sealed for life, no internal cleaning required
Installation	On 3-circuit track



Fresh Food, pendant

LED technology in a stylish pendant

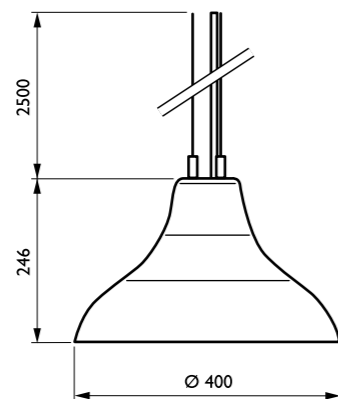
Retailers want to create an appealing ambiance and enhance the merchandize in their stores with the right light and beautifully designed products. They are also keen to reduce their running costs (energy, maintenance). By incorporating LED technology in a beautiful, pure design, the Fresh Food Pendant meets these expectations in full.

Features and Benefits

- Add a decorative dimension to your interior architecture
- High color rendering
- Specific color spectrum to enhance colors in the fresh food meat counters
- Attractive design
- Fresh Food Rose and Fresh Food Meat dedicated spectrum for meat counters
- Fresh Food Champagne dedicated spectrum for fruits, vegetables, bread and cheese counters suitable for a wide range of applications and ideal for enhancing the appearance of fresh food produce

Product size

All dimensions in millimeters



50Khrs
45
lm/W

Technical parameters

Type	PT570T
Light source	Non-replaceable LED module
Power	31 W (Fresh Food Rose, ROSE) 55 W (Fresh Food Champagne, CH) 64 W Fresh Food Meat, FMT) 26.5 W (Fresh Food Frost White, 840) 34 W (Fresh Food Authentic White, 930)
Luminous flux	1900 lm (LED19S, Fresh Food Rose, ROSE) 2700 lm (LED27S, Fresh Food Champagne, CH) 1900 lm (LED19S, Fresh Food Meat, FMT) 2900 lm (LED27S, Fresh Food Frost White, 840) 2700 lm (LED27S, Fresh Food Authentic White, 930)
Correlated Color Temperature	2200 K (LED19S, Fresh Food Rose, ROSE) 2500 K (LED27S, Fresh Food Champagne, CH) 3000 K (LED19S, Fresh Food Meat, FMT) 4000 K (LED27S, Fresh Food Frost White, 840) 3000 K (LED27S, Fresh Food Authentic White, 930)
Color Rendering Index	>80 (Fresh Food Rose, Fresh Food Meat, Fresh Food Frost White) >90 (Fresh Food Champagne, Fresh Food Authentic White)
Standard deviation color matching (SDCM)	3 (with a tolerance of $\pm 0,005$ on color point measurement)
Median useful life L70B50	50,000 hours
Median useful life L80B50	30,000 hours
Median useful life L90B50	20,000 hours
Average ambient temperature	25 °C
Operating temperature range	10 to 40 °C
Driver	Built-in
Mains voltage	230 or 240 V / 50-60 Hz
Dimming	Dali dimming on request
Material	Housing: aluminum Reflector: plastic Cover: plastic, opal
Color	Grey (RAL 9006)
Optic	Wide beam (WB, 60°)
Optical element	Diffuser (DF)
Maintenance	No internal cleaning required
Installation	Suspension set supplied with the product, cable length 2.5 m (not replaceable on site but longer length possible on request before order) Through-wiring not possible